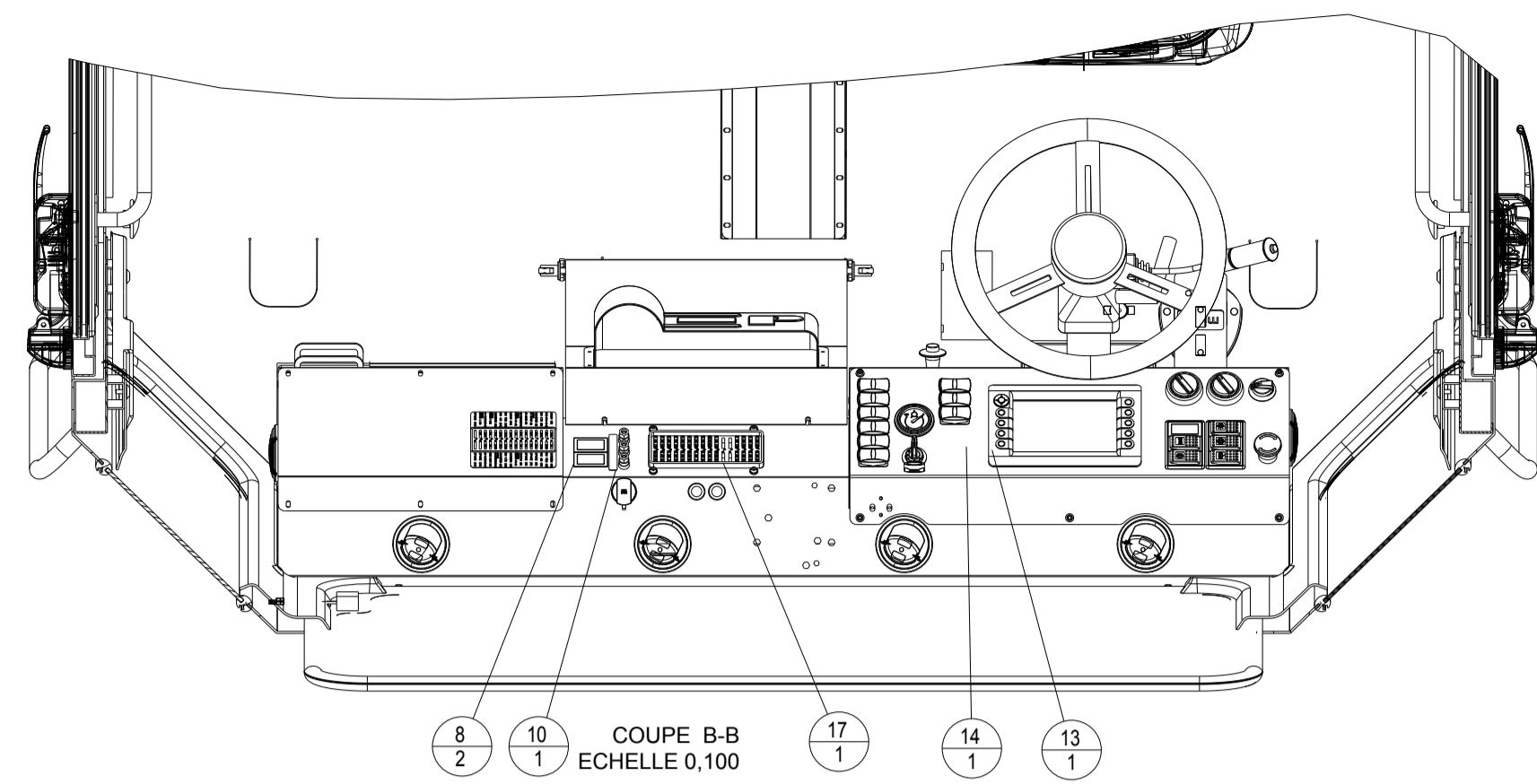
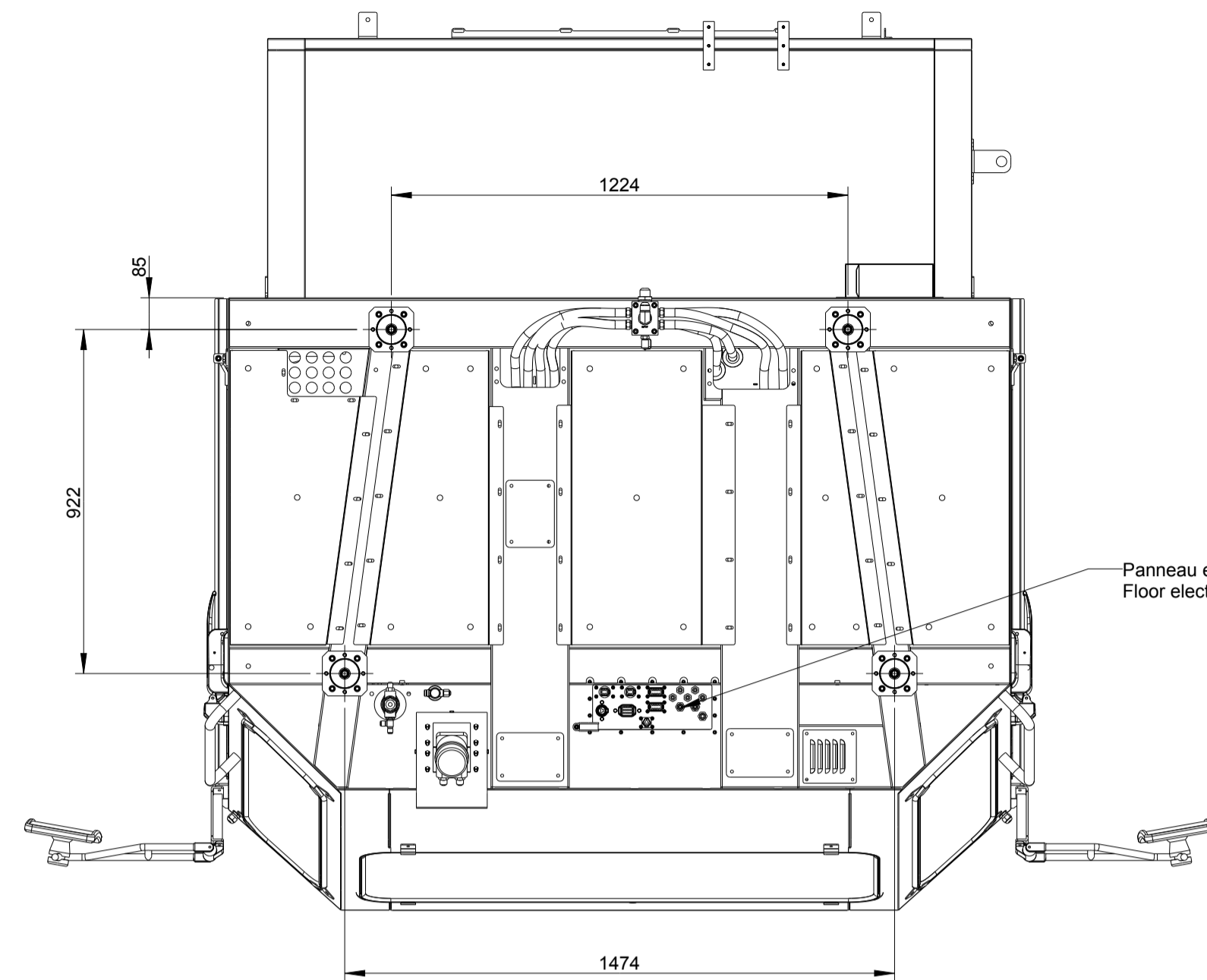


1. CAB / CABINE

604 641 031A	NOMAD 65 NEO CAB -50 °C COUCH	<i>CABINE N65 NEO -50 °C SLEEP</i>
604 640 523A	ASSY. CAB BULKHEAD	<i>ENSEMBLE PASSE CLOISON</i>
604 620 453B	ASSY. DASHBOARD C13-C15 NEO PDM	<i>ENS. TBD C13/C15 NEO PDM</i>
604 620 463A	-50 °C WINT. DASHBOARD	<i>PLANCHE TDB EQUIPEE WINT -50 °C</i>
604 680 124B	ASSY. BRAKE PEDAL	<i>ENSEMBLE PEDALE DE FREIN</i>
604 680 134A	ASSY. STEERING VALVE	<i>ENS. ORBITROLDE DIRECTION</i>
604 680 144C	ASSY. HORN VALVE	<i>ENS. COMMANDE AVERTISSEUR</i>
604 690 713D	ASSY. CAB ELEC PANEL NEO	<i>ASSEMBLAGE PLATINE ELECT. NEO</i>
604 690 263A	ACCESSORIES PLATE IN CABIN	<i>SUPPORT ACCESSOIRES CABINE</i>
604 660 173A	SIDE MIRRORS EXTENTION	<i>RALLONGE RETROVISEURS</i>
604 690 704A	ASSY. CAB MOUNTING	<i>ENS. SUPPORT CABINE</i>

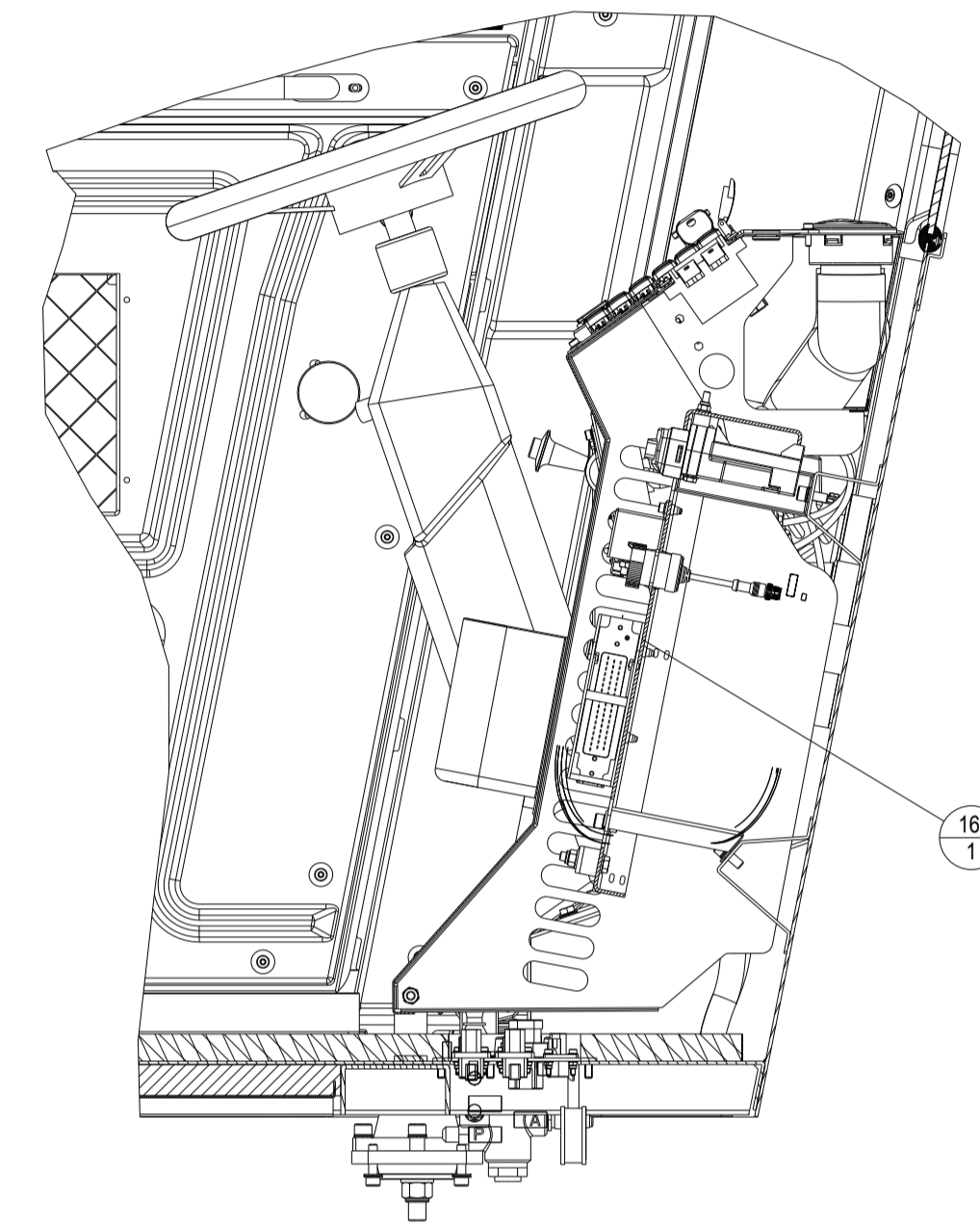
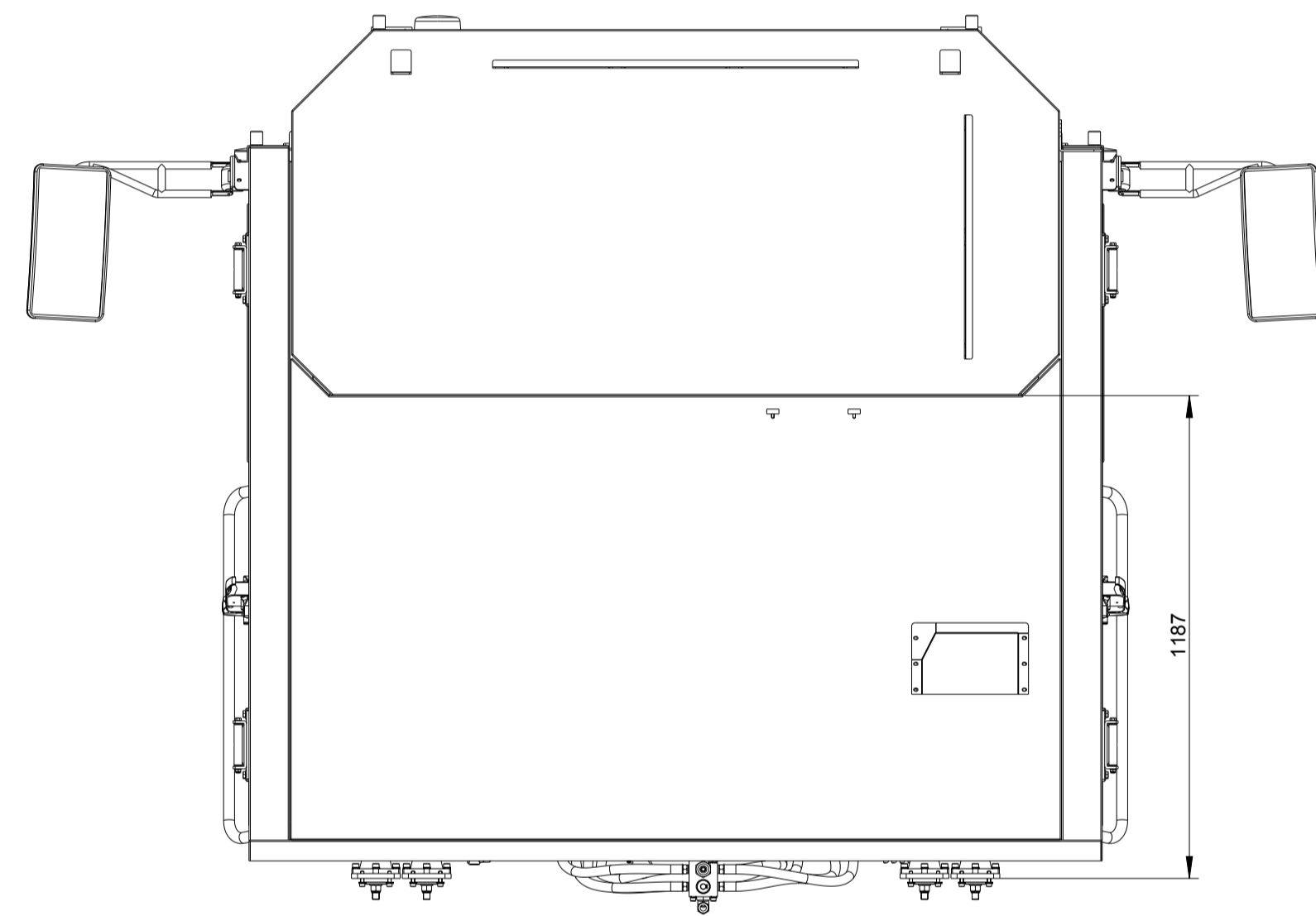
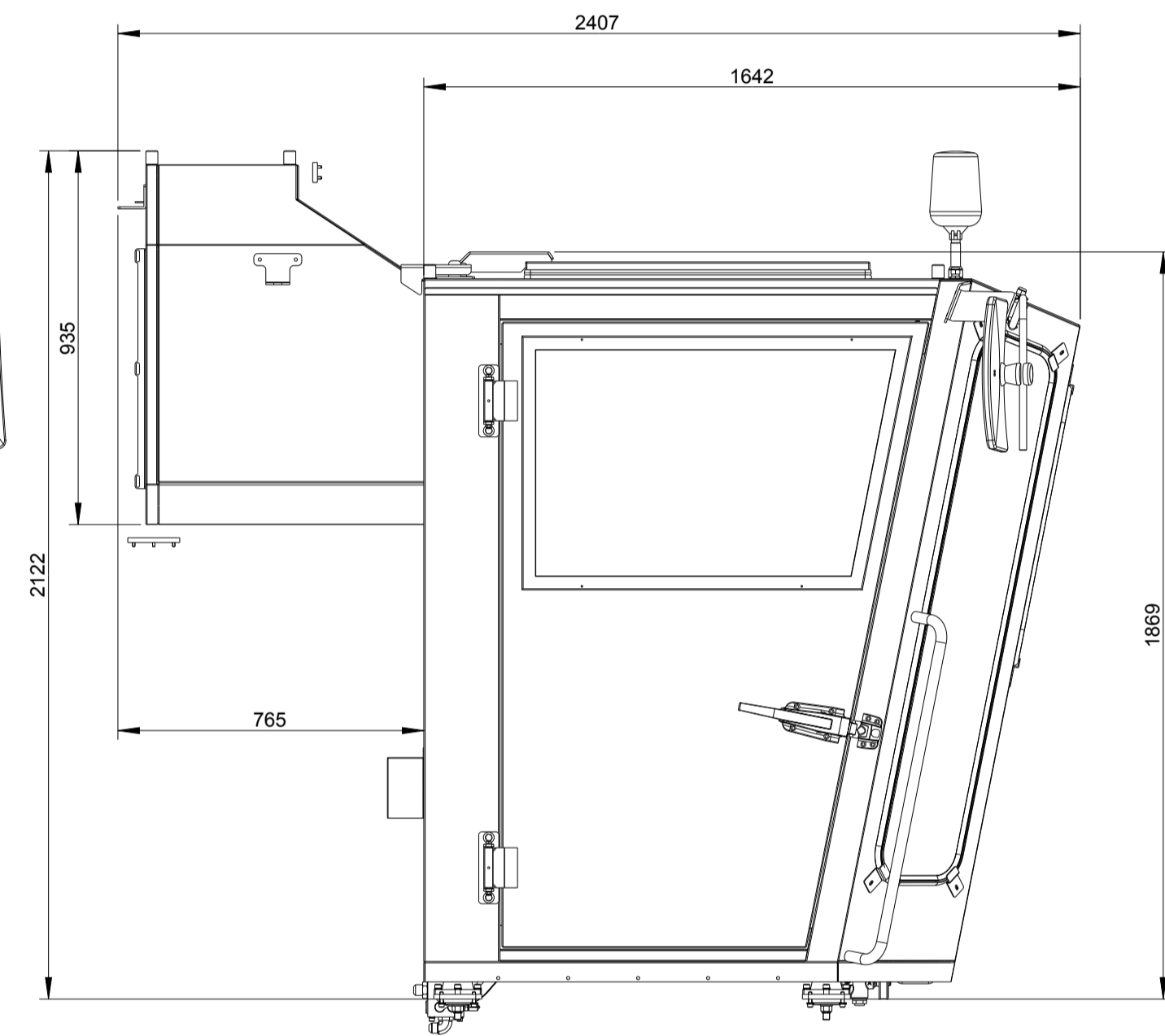
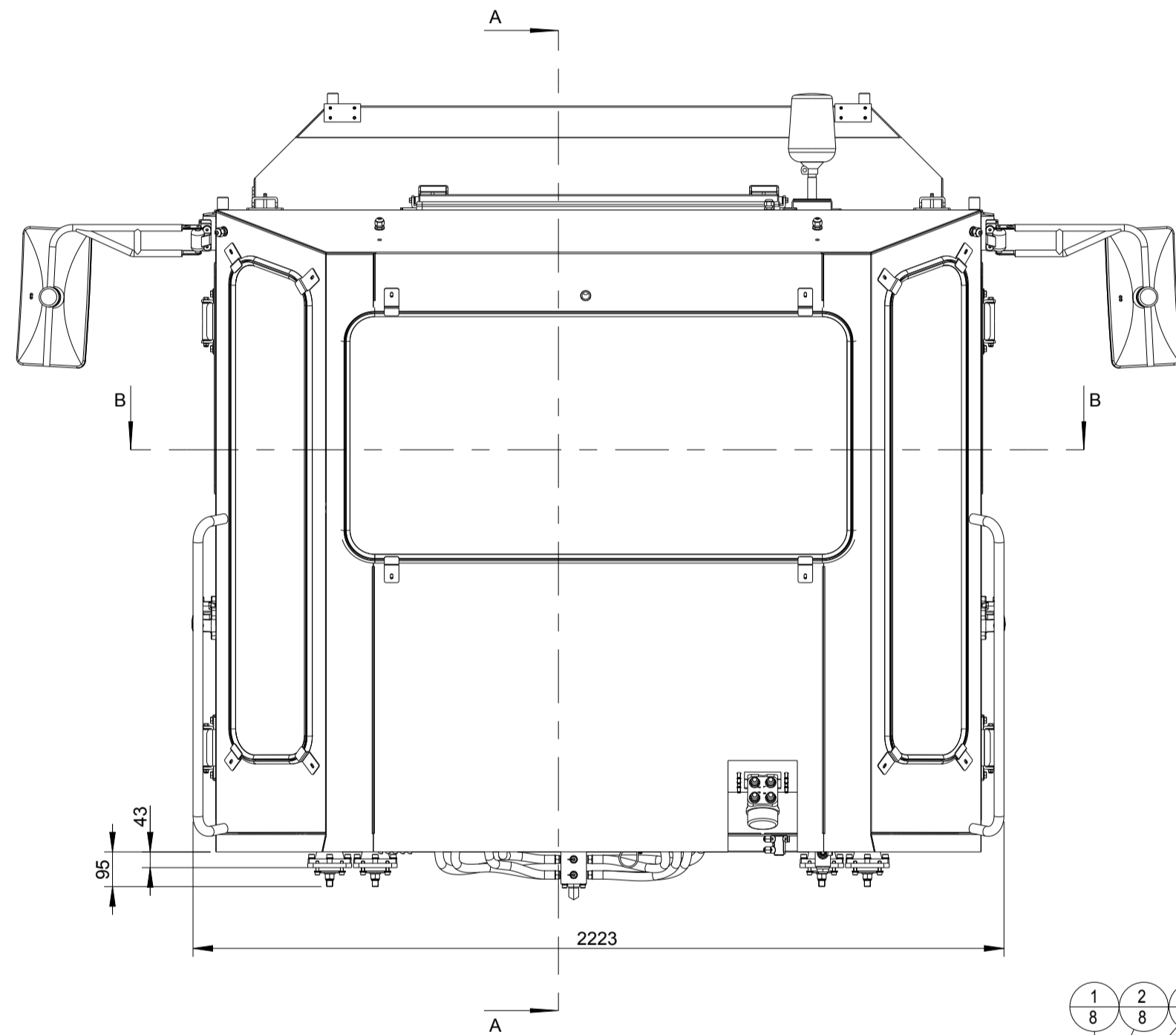


8 10 17 14 13
2 1 1 1 1
COUPE B-B
ECHELLE 0,100

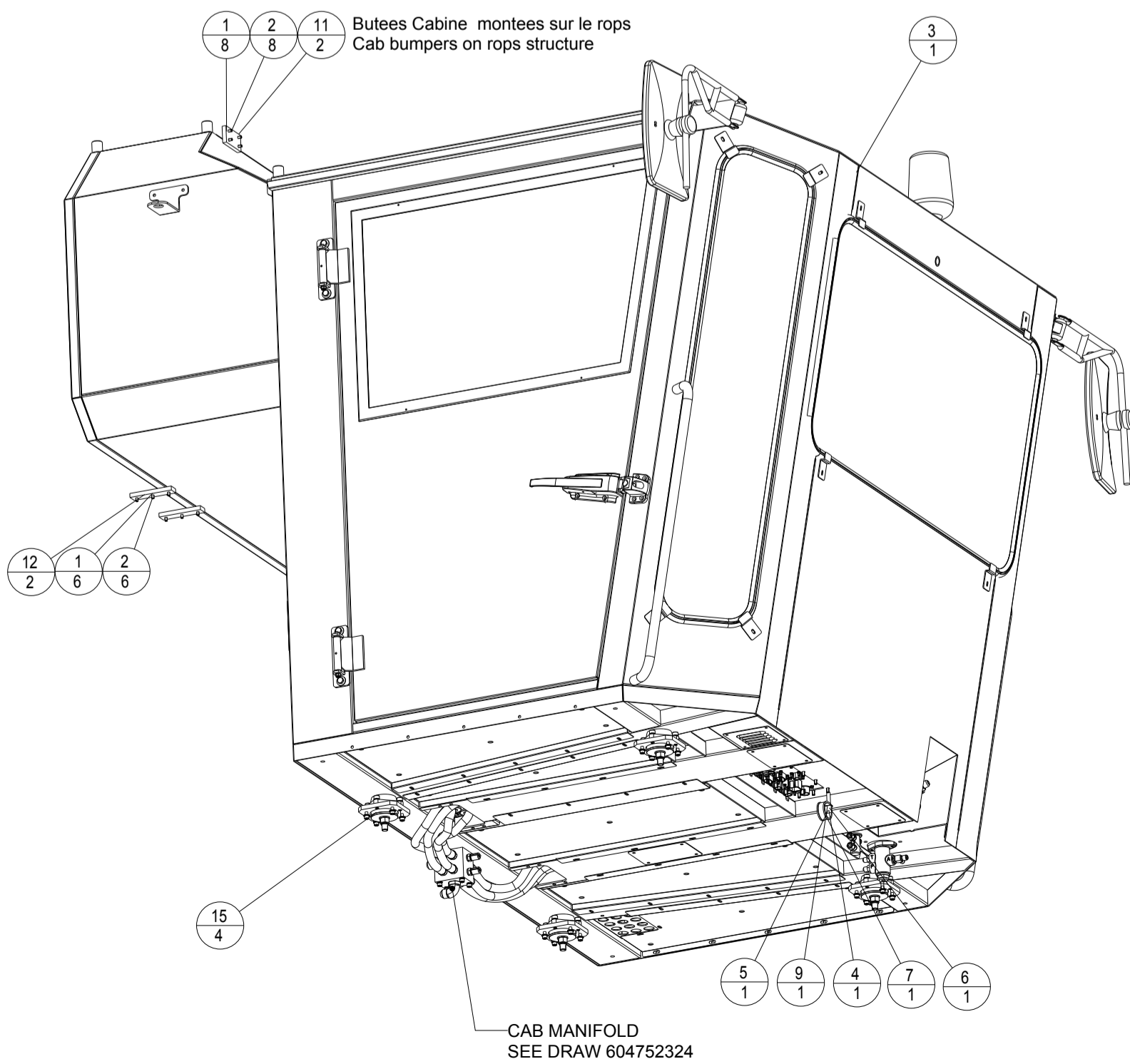


Panneau entree bas Plan 604830263
Floor electric input panel draw 604830263

REP ITM	CODE SERCEL PART NUM	DESIGNATION DESCRIPTION	REFERENCE / SPECIF / LA PART NUMBER / SPECIF.	QTE QTY
1	10006247	RONDELLE ANTI VIBR. M6 / VIBR. PROOF WASHER	SERCEL	14
2	10031995	VIS CHC M6-16 8.8 Tete basse Zing. / BOLT HEX HEAD SOC	SERCEL	1
3	10034241	CABINE GRAND FROID -50° / LOW TEMP. -50° CAB	SERCEL	1
4	21111466	VIS H M6-65/18 8.8 ZB. / BOLT HEX ZINC-PLATED	SERCEL	1
5	216411060	ECROU M6, B. PLAST CL8 Z.B / NUT LOCK	SERCEL	1
6	217141060	RONDELLE M6,U Z.B / PLAIN HEAVY DUTY WASHER	SERCEL	1
7	227110087	COLLIER DE FIXATION / CLAMP	SERCEL	1
8	323800015	CACHE POUR INTERRUPTEUR / PANEL PLUG	SERCEL	2
9	400181854	ENTRETOISE / SPACER	SERCEL	1
10	400186834	ETIQUETTE POWER SUPPLY N65 & N90 / LABEL POWER SUPPLY	SERCEL	1
11	400271354	BUTEE CABINE COUCHETTE / CAB BUMPER	SERCEL	2
12	400271374	BUTEE CABINE COUCHETTE / CAB BUMPER	SERCEL	2
13	604620392	CONSOLE PNEUMATIQUE CABINE / CAB PNEUMATIC PANEL	SERCEL	1
14	604620463	PLANCHE TDB EQUIPEE WINT. -50° / -50° WINT. DASHBOARD	SERCEL	1
15	604690704	ENS. SUPPORT CABINE / ASSY CAB MOUNT	SERCEL	4
16	604690713	ENS. PLATINE ELEC (IFM) / ASSY ELEC PANEL	SERCEL	1
17	604690724	ENS. BOITE A FUSIBLES / ASSY. FUSES BOX	SERCEL	1



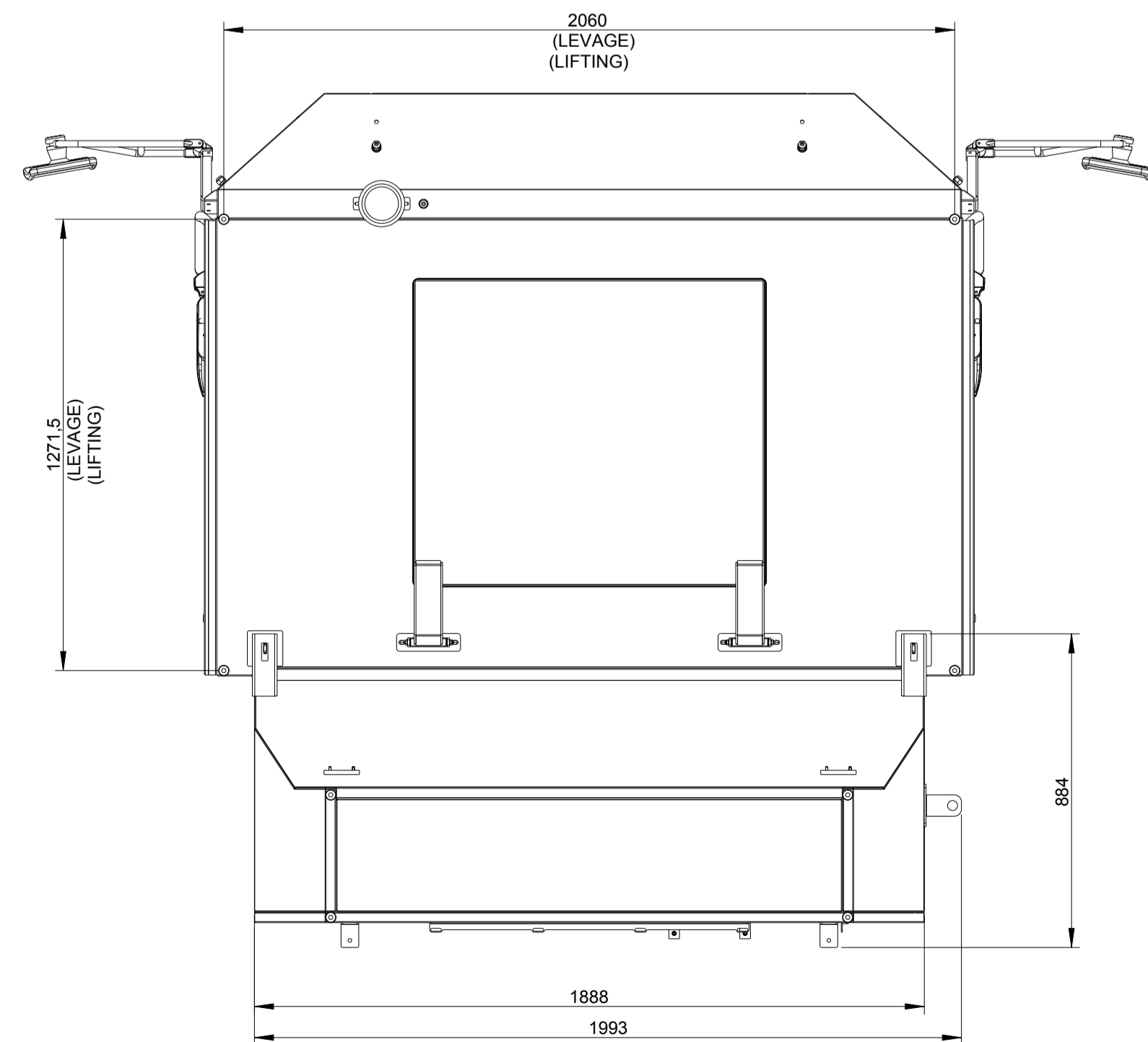
16
1
COUPE A-A
ECHELLE 0,150



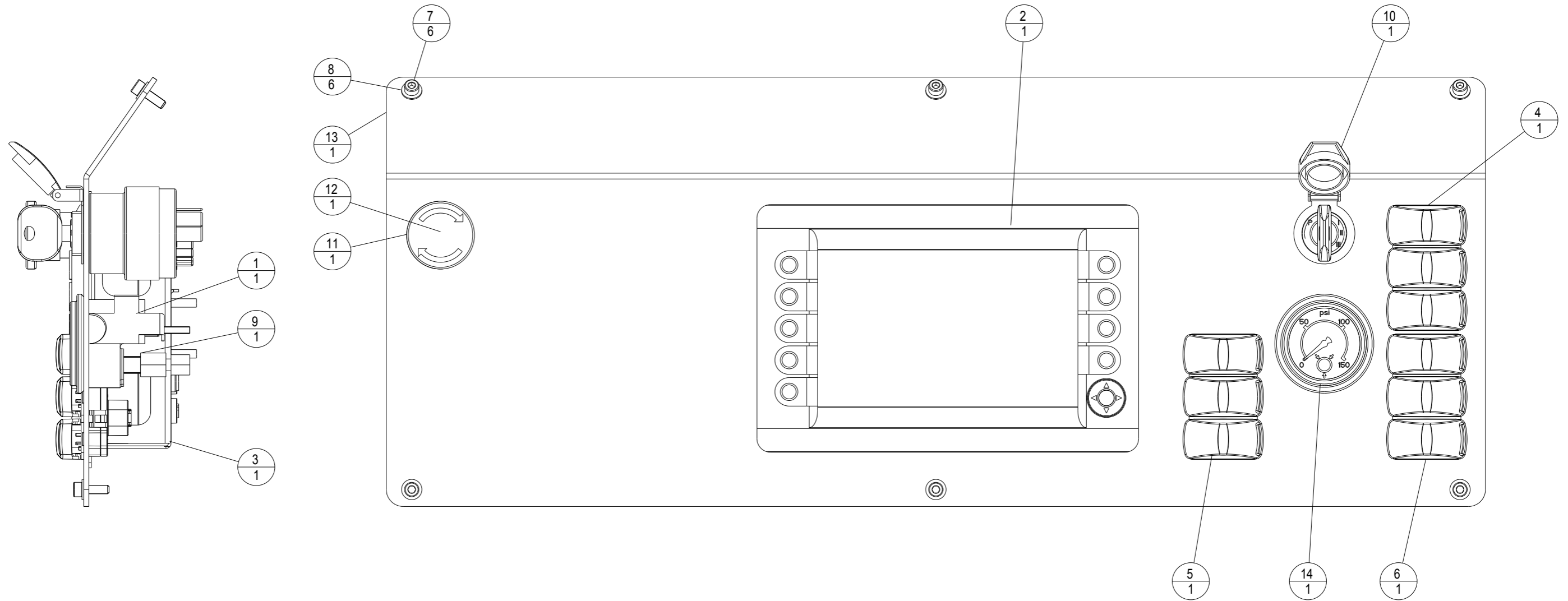
Butes Cabine montees sur le reservoir gasoil
Cab bumpers on fuel tank

1 2 11 3
8 8 2 1
Butes Cabine montees sur le rops
Cab bumpers on rops structure

15 4
CAB MANIFOLD
SEE DRAW 604752324



REV	D/T	NATURE DE LA MODIFICATION TYPE OF MODIFICATION	DESSINE/VERIFIE DRAWN/VERIFIED	DATE	VISA APPROUVE APPROVED	DATE	VISA
A		CREATION	SOU M D.	03/10/16	BUT TIN P.	03/10/16	
MATERIE/MATERIAL:		TRAITEMENT/TREATMENT:		COULEUR/COLOR:		MASSE/WEIGHT:	
				VOLUME: m3		2,581 T	
TITRE/TITLE N65 Neo ENS. CABINE GRAND FROID / ASSY LOW TEMP. CAB							
CE PLAN EST LA PROPRIETE INALIENABLE DE SERCEL ETABLISSEMENT DE SAINT GAUDENS				NUMERO DE PLAN / DRAWING REFERENCE 604641031		ETAT DE SURFACE/MACHINE FINISH: SUIVANT INSTRUCTION: S90200324	
BP 69 - 31802 SAINT GAUDENS CEDEX (FRANCE) Tel:(33)0561899000 Fax:(33)0561899033 CODE OTAN : F2577 Echelle: 0,065 CLQ: CL: MET Folio: 1/1							



REP ITM	CODE SERCEL PART NUM.	DESIGNATION DESCRIPTION	REFERENCE / SPECIF. / LA PART NUMBER / SPECIF.	QTE QTY
1	10007235	LAMPE 24V 2.8W / LIGHT 24V 2.8W	SERCEL	1
2	10008461	ECRAN 7" / SCREEN 7"	CR1085	1
3	10008615	SUPPORT MONTAGE / FRAME MOUNTING	SERCEL	1
4	10018135	SWITCH MODULE SLAVE1 /	SERCEL	1
5	10018136	SWITCH MODULE SLAVE2 /	SERCEL	1
6	10018138	SWITCH MODULE MASTER /	SERCEL	1
7	211334205	VIS CHC M5-16 12.9 NOIRE / BOLT HEX HEAD SOC	SERCEL	6
8	217141050	RONDELLE M5,U,Z.B / PLAIN HEAVY DUTY WASHER	SERCEL	6
9	295701007	UNION FEMELLE-NPT 1/8 / ADAPTOR 1/8 NPT	SERCEL	1
10	323500033	COMMUTATEUR DE DEMARRAGE / IGNITION KEY	HELLA	1
11	323600002	BOUTON ARRET D'URGENCE / STOP EMERGENCY	SERCEL	1
12	323900001	CONTACT AUXILIAIRE NO / AUX SWITCH NO	SERCEL	1
13	400272573	PLAQUE TABLEAU DE BORD / DASHBORD SHEET	SERCEL	1
14	790002306	GAUGE, AIR PRESSURE INT 07253-00 / MANOMETRE AIR	MERTZ: 2390792	1

F									
E									
D									
C									
B	T	ECO 207260	SOU M D.	25/10/16		BUT TIN P.	25/10/16		
A		CREATION	SOU M D.	10/08/16		BUT TIN P.	10/08/16		
REV	D/T	NATURE DE LA MODIFICATION TYPE OF MODIFICATION	DESSINE/VERIFIE DRAWN/VERIFIED	DATE	VISA	APPOUVE APPROVED	DATE	VISA	
MATIERE/MATERIAL:						COULEUR/COLOR:		MASSE/WEIGHT: 0,009 T	
TRAITEMENT/TREATMENT:						VOLUME: m3			
TITRE/TITLE						LE PLAN ORIGINAL SIGNE EST AU PLANEX		TOL.GEN./GEN.TOL. (Sauf specif):	
NOMAD								ETAT DE SURFACE/MACHINE FINISH:	
PLANCHE TDB EQUIPEE / DASHBOARD								SUIVANT INSTRUCTION: S902000324	
						CE PLAN EST LA PROPRIETE INALIENABLE DE		NUMERO DE PLAN / DRAWING REFERENCE	
SERCEL ETABLISSEMENT DE SAINT GAUDENS								Echel: 0,400 Scale	
BP 69 - 31802 SAINT-GAUDENS CEDEX (FRANCE) Tel:(33)0561899000 Fax:(33)05 61899033								CLQ: /REF	
CODE OTAN : F2577								CL : 04 ART	
S 904 00 0233/00 Ce document est la propriété de SERCEL St-GAUDENS, toute reproduction et diffusion sont interdites sans son autorisation								Folio: 1/1	

2

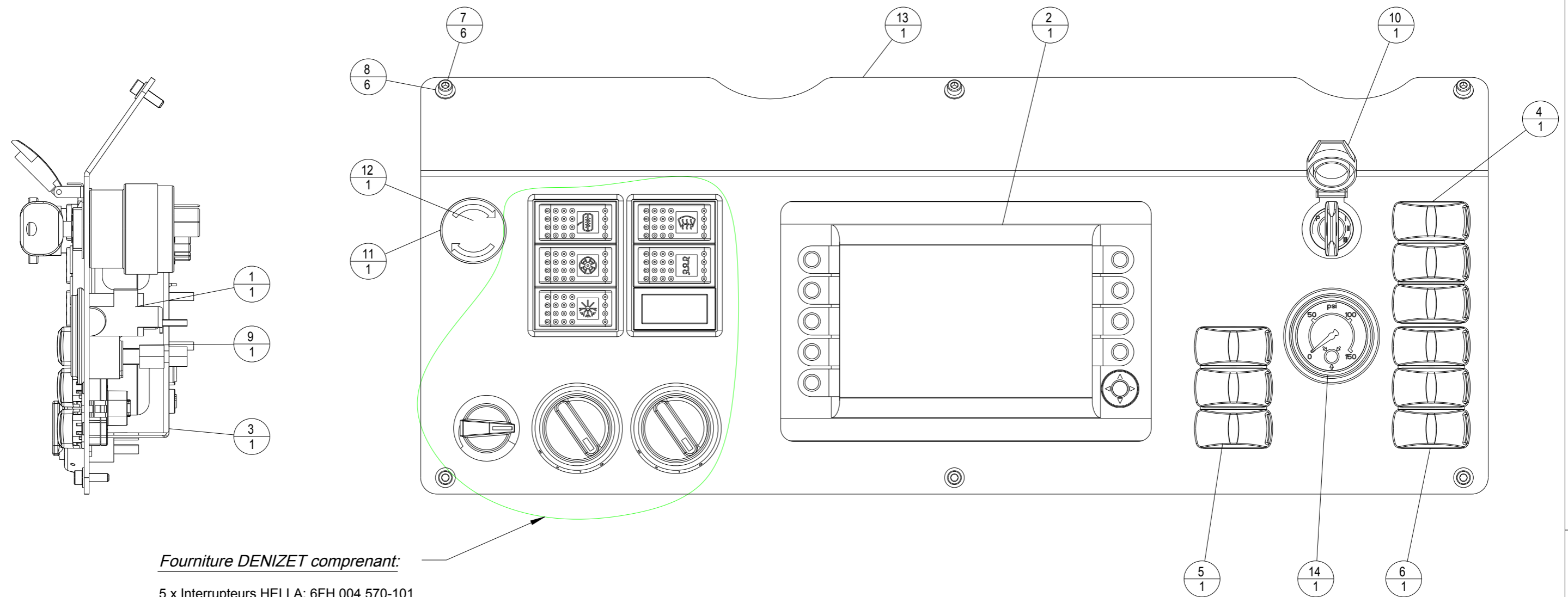
1

D

C

B

A



Fourniture DENIZET comprenant:

5 x Interrupteurs HELLA: 6FH 004 570-101
 5 x Ampoules inter. HELLA: 9FF 713 627-011
 5 x Symboles inter HELLA suivant representation
 2 x Embases inter HELLA: 8HG 714 504-001
 1 x Cache inter HELLA: 9HB 713 629-001
 1 x Potentiometre commande vanne de chauffage
 2 x Interrupteurs rotatifs KALORI: 340-30-061

REP ITM	CODE SERCEL PART NUM.	DESIGNATION DESCRIPTION	REFERENCE / SPECIF / LA PART NUMBER / SPECIF.	QTE QTY
1	10007235	LAMPE 24V 2.8W / LIGHT 24V 2.8W	SERCEL	1
2	10008461	ECRAN 7" / SCREEN 7"	CR1085	1
3	10008615	SUPPORT MONTAGE / FRAME MOUNTING	SERCEL	1
4	10018135	SWITCH MODULE SLAVE1 /	SERCEL	1
5	10018136	SWITCH MODULE SLAVE2 /	SERCEL	1
6	10018138	SWITCH MODULE MASTER /	SERCEL	1
7	211334205	VIS CHC M5-16 12.9 NOIRE / BOLT HEX HEAD SOC	SERCEL	6
8	217141050	RONDELLE M5,U,Z.B / PLAIN HEAVY DUTY WASHER	SERCEL	6
9	295701007	UNION FEMELLE-NPT 1/8 / ADAPTOR 1/8 NPT	SERCEL	1
10	323500033	COMMUTATEUR DE DEMARRAGE / IGNITION KEY	HELLA	1
11	323600002	BOUTON ARRET D'URGENCE / STOP EMERGENCY	SERCEL	1
12	323900001	CONTACT AUXILIAIRE NO / AUX SWITCH NO	SERCEL	1
13	400273423	PLAQUE TABLEAU DE BORD WINT.-50° / DASHBORD SHEET WINT.-50°	SERCEL	1
14	790002306	GAUGE, AIR PRESSURE INT 07253-00 / MANOMETRE AIR	MERTZ: 2390792	1

F										
E										
D										
C										
B										
A		CREATION	SOU M D.	04/10/16	BUTTIN P.	04/10/16				
REV	D/T	NATURE DE LA MODIFICATION TYPE OF MODIFICATION	DESSINE/VERIFIE DRAWN/VERIFIED	DATE	VISA	APPOUVE APPROVED	DATE	VISA		
MATIERE/MATERIAL:						COULEUR/COLOR:		MASSE/WEIGHT: 0,009 T		
TRAITEMENT/TREATMENT:						VOLUME: m3				
TITRE/TITLE						LE PLAN ORIGINAL SIGNE EST AU PLANEX		TOL.GEN./GEN.TOL. (Sauf specif):		
N65 Neo								ETAT DE SURFACE/MACHINE FINISH:		
PLANCHE TDB EQUIPEE WINT.-50° / -50° WINT. DASHBOARD								SUIVANT INSTRUCTION: S902000324		
						CE PLAN EST LA PROPRIETE INALIENABLE DE		NUMERO DE PLAN / DRAWING REFERENCE		Echel: 0,400 Scale
SERCEL ETABLISSEMENT DE SAINT GAUDENS								604620463		CLQ: /REF CL: 04 ART
BP 69 - 31802 SAINT-GAUDENS CEDEX (FRANCE) Tel:(33)0561899000 Fax:(33)05 61899033										Folio: 1/1
CODE OTAN : F2577										
S 904 00 0233/00 Ce document est la propriété de SERCEL St-GAUDENS, toute reproduction et diffusion sont interdites sans son autorisation										

D

C

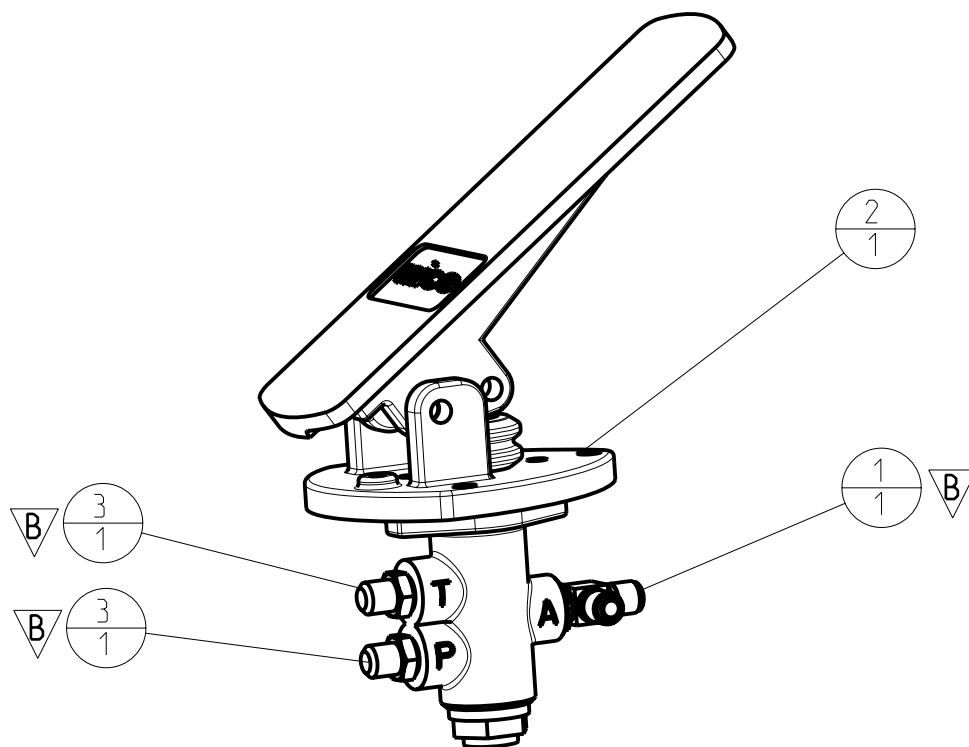
B

A

B

A

REP ITM	CODE TYPE DOC. TYPE NUMBER	CODE SERCEL PART NUM.	DESIGNATION DESCRIPTION	REFERENCE / SPECIF. / LA PART NUMBER / SPECIF.	QTE QTY	Long/ou volume
1		2292054	FITTING, 203005-6-6S	790000256	1	
2		265401003	PEDALE DE FREIN	SERCEL	1	
3		790000290	FITTING, F50XS10-9/16	SERCEL	2	



F								
E								
D								
C								
B		DM03 0505	SOU M D.	01-Oct-03		BUTTIN P.	01-Oct-03	
A		CREATION	GCR	02-Jan-02		BUTTIN P.	02-Jan-02	
REV D/T	NATURE DE LA MODIFICATION TYPE OF MODIFICATION		DESSINE/VERIFIE DRAWN/VERIFIED	DATE	VISA	APPOUVE APPROVED	DATE	VISA

MATIERE/MATERIAL:

COULEUR/COLOR:

MASSE/WEIGHT:
0,000 Kg

TRAITEMENT/TREATMENT:

VOLUME: m3

TITRE/TITLE

LE PLAN ORIGINAL SIGNE EST AU PLANEX

TOL.GEN./GEN.TOL.(Sauf specif):

NOMAD

PEDALE DE FREIN EQUIPE

ETAT DE SURFACE/MACHINE FINISH:

SUIVANT INSTRUCTION:
S902000324

CE PLAN EST LA PROPRIETE INALIENABLE DE
**SERCEL ETABLISSEMENT
 DE SAINT GAUDENS**

NUMERO DE PLAN / DRAWING REFERENCE

PE004604680124

Echel: 0,300
Scale

CLO:

/REF

CL: 04

ART

Folio: 1/1

CODE OTAN: F2577

BP 69 - 31802 SAINT-GAUDENS CEDEX (FRANCE)
Tel:(33)(0)561899000 Fax:(33)(0)5 61899033

S 904 00 0233/00 Ce document est la propriété de SERCEL ST-GAUDENS, toute reproduction et diffusion sont interdites sans son autorisation

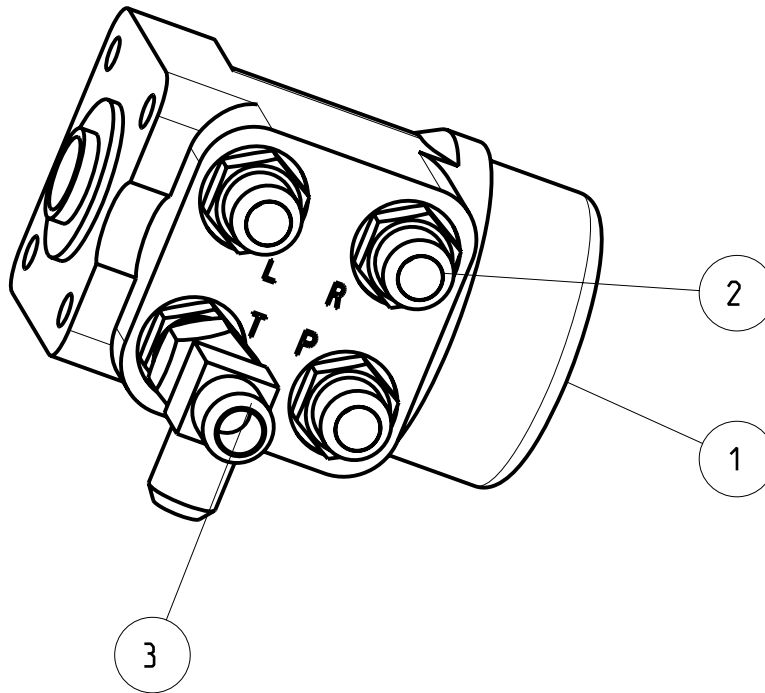
B

A

B

A

REP ITM	CODE TYPE DOC. TYPE NUMBER	CODE SERCEL PART NUM.	DESIGNATION DESCRIPTION	REFERENCE / SPECIF. / LA PART NUMBER / SPECIF.	QTE QTY	Long/ou volume
1		265142002	?????????	SERCEL	1	
2		271791541	ADAPTEUR F80XS12M18	SERCEL	4	
3		274491441	ADAPTEUR R6XS12	SERCEL	1	



2

F								
E								
D								
C								
B								
A		CREATION	GCR	03-Jan-02		BUTIN P.	03-Jan-02	

REV D/T	NATURE DE LA MODIFICATION TYPE OF MODIFICATION	DESSINE/VERIFIE DRAWN/VERIFIED	DATE	VISA	APPOUVE APPROVED	DATE	VISA
---------	---	-----------------------------------	------	------	---------------------	------	------

1

MATIERE/MATERIAL:	COULEUR/COLOR:	MASSE/WEIGHT: 0,000 Kg
TRAITEMENT/TREATMENT:	VOLUME: m3	
TITRE/TITLE NOMAD ORBITROL EQUIPE	LE PLAN ORIGINAL SIGNE EST AU PLAN X	TOL.GEN./GEN.TOL.(Sauf specif): ETAT DE SURFACE/MACHINE FINISH: SUIVANT INSTRUCTION: S902000324

	CE PLAN EST LA PROPRIETE INALIENABLE DE SERCEL ETABLISSEMENT DE SAINT GAUDENS BP 69 - 31802 SAINT-GAUDENS CEDEX (FRANCE) Tel:(33)(0)561899000 Fax:(33)(0)5 61899033	NUMERO DE PLAN / DRAWING REFERENCE PE004604680134	Echel: 0,500 Scale CLO: /REF CL : 04 ART Folio: 1/1
	CODE OTAN : F2577		

S 904 00 0233/00 Ce document est la propriété de SERCEL ST-GAUDENS, toute reproduction et diffusion sont interdites sans son autorisation

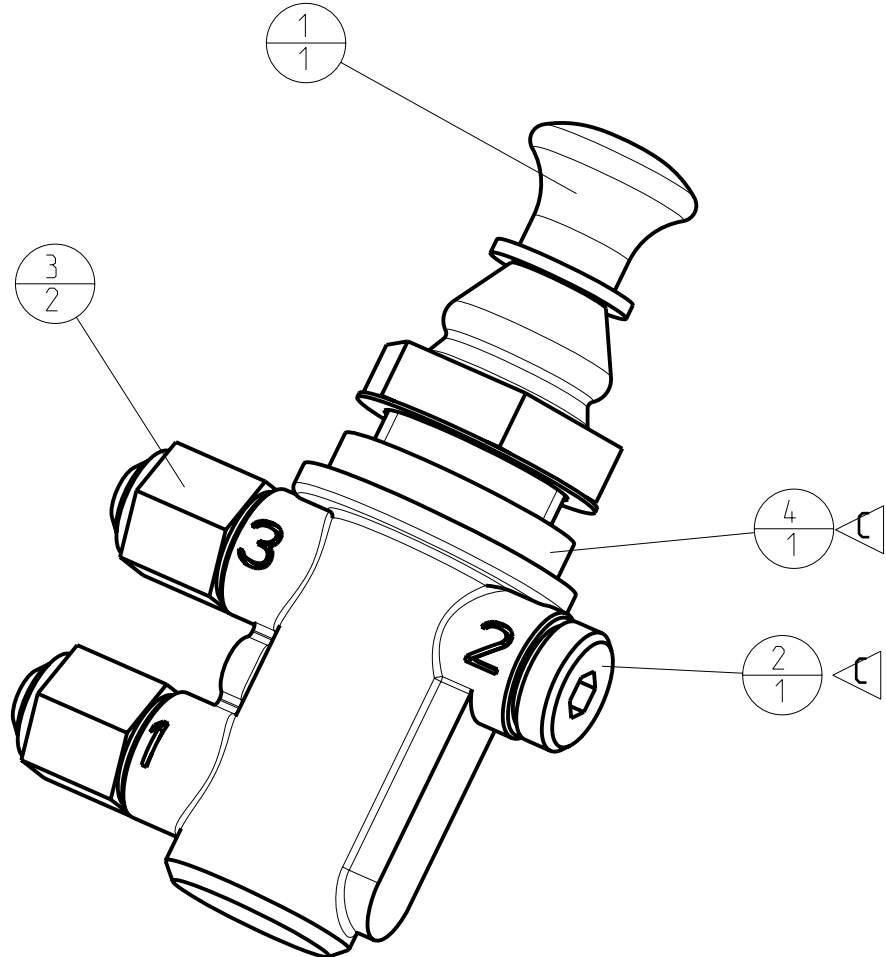
B

A

B

A

REP ITM	CODE TYPE DOC. TYPE NUMBER	CODE SERCEL PART NUM.	DESIGNATION DESCRIPTION	REFERENCE / SPECIF. / LA PART NUMBER / SPECIF.	QTE QTY	Long/cu volume
1		252000002	COMMANDE AVERTISSEUR	SERCEL	1	
2		271700202	BOUCHON M12x1.5	SERCEL	1	
3		295712003	UNION MALE METRIQUE CYLINDRIQUE M12x1.5	PARKER: F8PB8M12	2	
4	PF004	400190204	ENTRETOISE COMMANDE AVERTISSEUR	SERCEL	1	



F								
E								
D								
C	C	DM05 1028	DUMAS M.	10/04/05	BUTTIN P.	10/04/05		
B		02 28 21 DM02 0406	SOUM D.	10/07/02	BUTTIN P.	10/07/02		
A		CREATION	DUMAS M.	18-Feb-02	BUTTIN P.	18-Feb-02		
REV D/T	NATURE DE LA MODIFICATION TYPE OF MODIFICATION		DESSINE/VERIFIE DRAWN/VERIFIED	DATE	VISA	APPOUVE APPROVED	DATE	VISA

MATIERE/MATERIAL:

COULEUR/COLOR:

MASSE/WEIGHT:
0,800 Kg

TRAITEMENT/TREATMENT:

VOLUME: m3

TITRE/TITLE

LE PLAN ORIGINAL SIGNE EST AU PLANEX

TOL.GEN./GEN.TOL.(Sauf specifi):

NOMADE

ETAT DE SURFACE/MACHINE FINISH:

ASSEMBLAGE COMMANDE AVERTISSEUR

SUIVANT INSTRUCTION:

S902000324

CE PLAN EST LA PROPRIETE INALIENABLE DE
**SERCEL ETABLISSEMENT
 DE SAINT GAUDENS**

NUMERO DE PLAN / DRAWING REFERENCE
PE004604680144

Echel: 1,000
 Scale
 CLO: Z
 /REF
 CL: 04
 ART
 Folio: 1/1

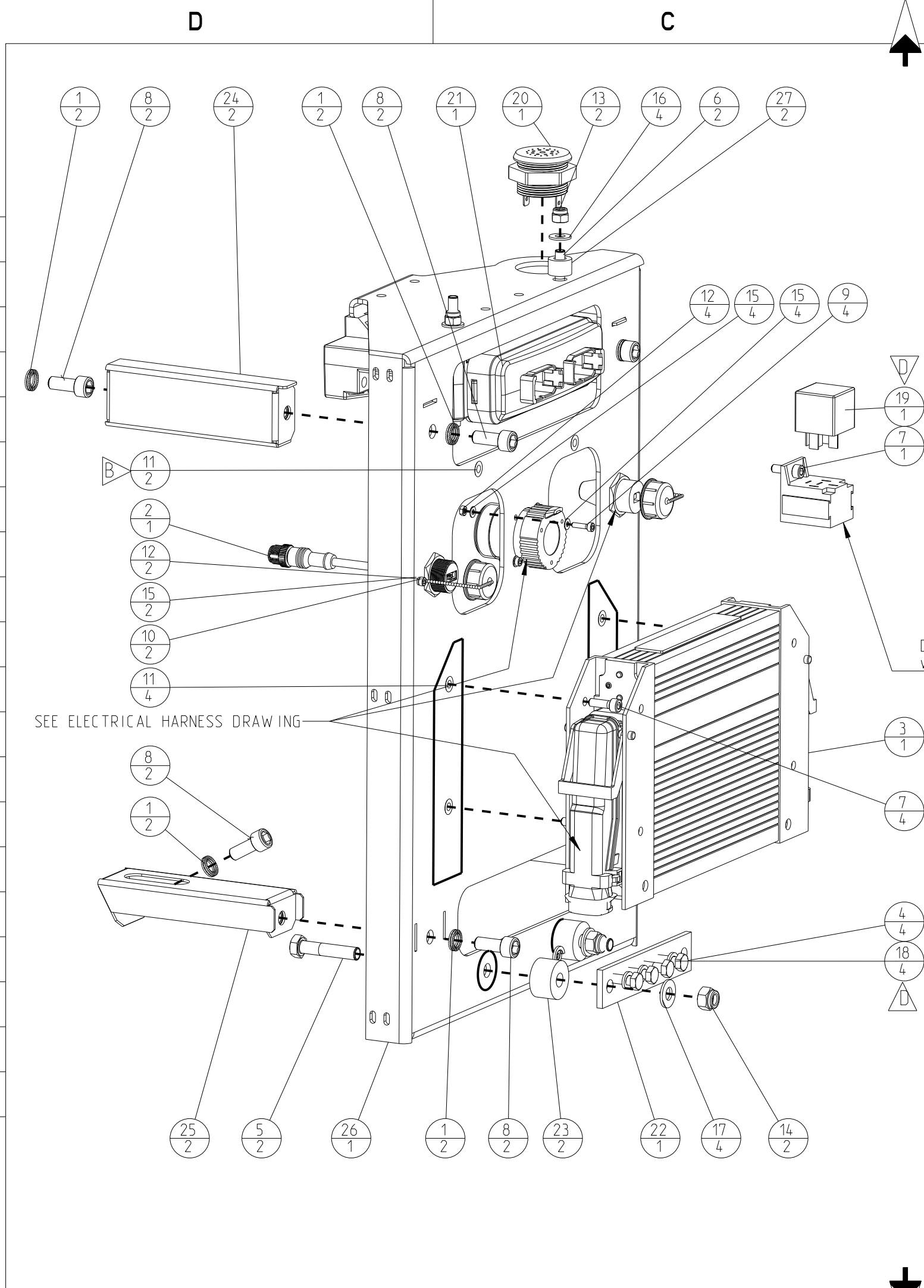
CODE OTAN: F2577

BP 69 - 31802 SAINT-GAUDENS CEDEX (FRANCE)
 Tel:(33)(0)561899000 Fax:(33)(0)5 61899033

S 904 00 0233/00 Ce document est la propriété de SERCEL ST-GAUDENS, toute reproduction et diffusion sont interdites sans son autorisation

B

A



REP ITM	CODE SERCEL PART NUM.	DESIGNATION DESCRIPTION	REFERENCE / SPECIF / LA PART NUMBER / SPECIF.	QTE QTY
1	10006258	RONDELLE ANTI VIBR. M8 / VIBR.PROOF WASHER	SERCEL	8
2	10017071	PRISE USB / USB CONNECTOR	SERCEL	1
3	10033862	CALCULATEUR MAITRE / MASTER CONTROLLER	SERCEL	1
4	211111206	VIS H M6-16 8.8 ZB. / BOLT HEX ZINC-PLATED	SERCEL	4
5	211111367	VIS H M8-40 8.8 ZB. / BOLT HEX ZINC-PLATED	SERCEL	2
6	211111526	VIS H M6-80 8.8 ZB. / BOLT HEX ZINC-PLATED	SERCEL	2
7	211311205	VIS CHC M5-16 8.8 ZB. / BOLT HEX HEAD SOC	SERCEL	5
8	211311247	VIS CHC M8-20 8.8 ZB. / BOLT HEX HEAD SOC	SERCEL	8
9	211334163	VIS CHC M3-12 12.9 NOIRE / BOLT HEX HEAD SOC	SERCEL	4
10	211356143	VIS CHC M3-10 INOX A2 / BOLT HEX HEAD SOC	SERCEL	2
11	215541303	RIVEKLE TFO M5 / NUT CAGE	BOLLHOFF 23317050300	6
12	216150030	ECROU H,M3 / NUT H	SERCEL	6
13	216411060	ECROU M6, B. PLAST CL8 Z.B / NUT LOCK	SERCEL	2
14	216411080	ECROU M8, B. PLAST CL8 Z.B / NUT LOCK	SERCEL	2
15	217141030	RONDELLE M3 / PLAIN HEAVY DUTY WASHER	SERCEL	10
16	217141060	RONDELLE M6,U Z.B / PLAIN HEAVY DUTY WASHER	SERCEL	4
17	217141080	RONDELLE M8,U,Z.B / PLAIN HEAVY DUTY WASHER	SERCEL	4
18	217941060	RONDELLE, W6 Z.B / WASHER LOCK	SERCEL	4
19	322100009	RELAJ 24V 20/30A AVEC DIODE / RELAY W/ DIODE	SERCEL	1
20	325800019	BUZZER / BUZZER	SERCEL	1
21	364000014	PLUS +I / PLUS +I	SERCEL	1
22	400154494	BARRE CUIVRE / TIE BAR	SERCEL	1
23	400154544	PLOT SUPPORT BARRE MASSE / TIE BAR BRACKET	SERCEL	2
24	400272034	ENTRETOISE SUP / UPPER SPACER	SERCEL	2
25	400272044	ENTRETOISE INF / LOWER SPACER	SERCEL	2
26	400272053	PLATINE / PANEL	SERCEL	1
27	400272454	ENTRETOISE PLUS I / SPACER	SERCEL	2

Delivered with the harness

SEE ELECTRICAL HARNESS DRAWING

F								
E								
D	T	ECO 208245	LMASLANK	Sep-28-17	BUTTIN.P	Sep-28-17		
C	T	ECO 208071	SOUM D.	13/07/17	BUTTIN P.	13/07/17		
B	T	ECO 207260	SOUM D.	25/10/16	BUTTIN P.	25/10/16		
A		CREATION	PB	May-03-16	BUTTIN P.	May-03-16		

REV/D/T	NATURE DE LA MODIFICATION TYPE OF MODIFICATION	DESSINE/VERIFIE DRAWN/VERIFIED	DATE	VISA	APPROUVE APPROVED	DATE	VISA
	MATIERE/MATERIAL:				COULEUR/COLOR:		MASSE/WEIGHT: 0,015 T
	TRAITEMENT/TREATMENT:				VOLUME: m3		

TITRE/TITLE: LE PLAN ORIGINAL SIGNE EST AU PLANEX
 TOL.GEN./GEN.TOL. (Sauf specifi):
 ETAT DE SURFACE/MACHINE FINISH:
 SUIVANT INSTRUCTION:
 S902000324

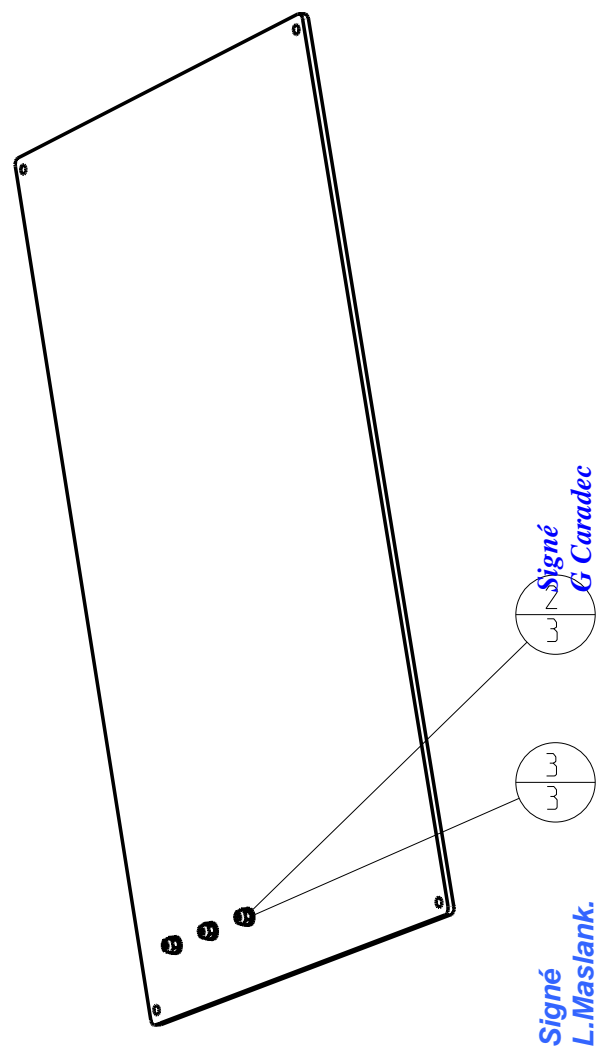
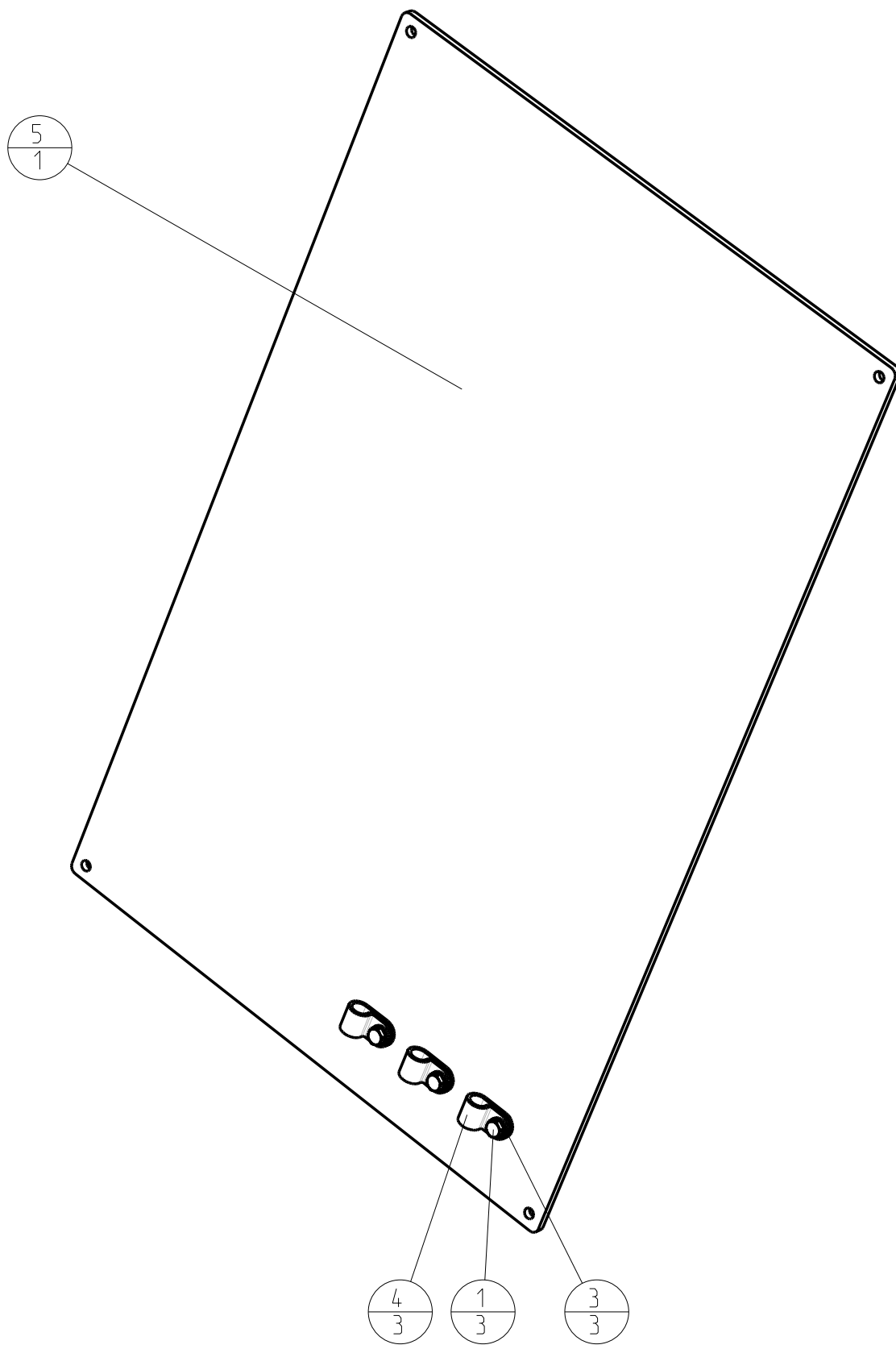
N65
ENS PLATINE ELEC (IFM) / ASSY ELEC PANEL

CE PLAN EST LA PROPRIETE INALIENABLE DE
SERCEL ETABLISSEMENT DE SAINT GAUDENS
 BP 69 - 31802 SAINT-GAUDENS CEDEX (FRANCE)
 Tel:(33)(0)561899000 Fax:(33)(0)5 61899033
 CODE OTAN : F2577

NUMERO DE PLAN / DRAWING REFERENCE
604690713

Echel / Scale: 0,350
 CLQ: /REF
 CL: ART
 Folio: 1/1

REP ITM	CODE TYPE DOC. TYPE NUMBER	CODE SERCEL PART NUM.	DESIGNATION DESCRIPTION	REFERENCE / SPECIF. / LA PART NUMBER / SPECIF.	QTE QTY	Long/ou volume
1		211111246	VIS HM 6X20 8.8 ZB	SERCEL	3	
2		216411060	ECROU M6, B. PLAST	SERCEL	3	
3		217141060	RONDELLE M6 , U , Z.B	SERCEL	6	
4		316070025	ATTACHE GAINE Y8211002	ADR	3	
5	PF003	400159613	TOLE SUPPORT RADIO	SERCEL	1	



F									
E									
D									
C									
B									
A		CREATION	DUMAS M.	13-Dec-02		BUTTIN P.	13-Dec-02		
REV D/T		NATURE DE LA MODIFICATION TYPE OF MODIFICATION	DESSINE/VERIFIE DRAWN/VERIFIED	DATE	VISA	APPOUVE APPROVED	DATE	VISA	
MATIERE/MATERIAL:						COULEUR/COLOR:		MASSE/WEIGHT: 3,800 Kg	
TRAITEMENT/TREATMENT:						VOLUME: m3		TOL.GEN./GEN.TOL.(Sauf specif):	
TITRE/TITLE		LE PLAN ORIGINAL SIGNE EST AU PLANEX				ETAT DE SURFACE/MACHINE FINISH: SUIVANT INSTRUCTION: S902000324			
NOMAD		SERCEL ETABLISSEMENT DE SAINT GAUDENS				NUMERO DE PLAN / DRAWING REFERENCE		Echel: 0,143 Scale CLO: Y /REF	
ASSEMBLAGE SUPPORT RADIO		CODE OTAN : F2577				PE003604690263		CL : 04 ART	
		BP 69 - 31802 SAINT-GAUDENS CEDEX (FRANCE) Tel:(33)0561899000 Fax:(33)05 61899033						Folio: 1/1	
S 904 00 0233/00 Ce document est la propriété de SERCEL SI-GAUDENS, toute reproduction et diffusion sont interdites sans son autorisation									

2
DRW 604690263 Version AA

1

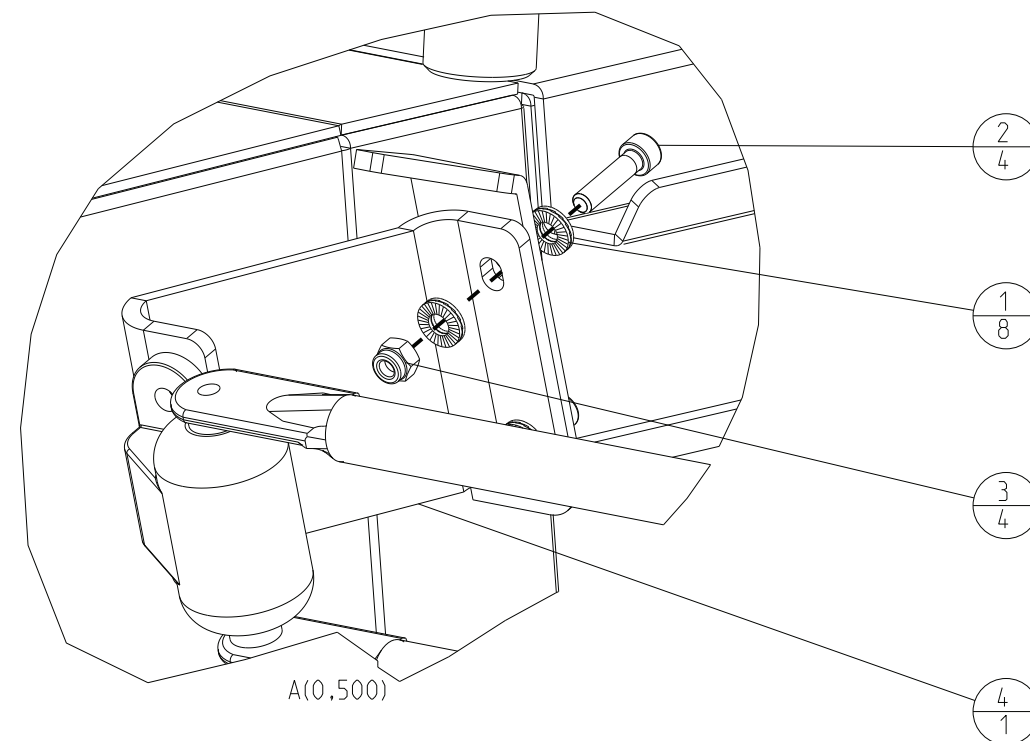
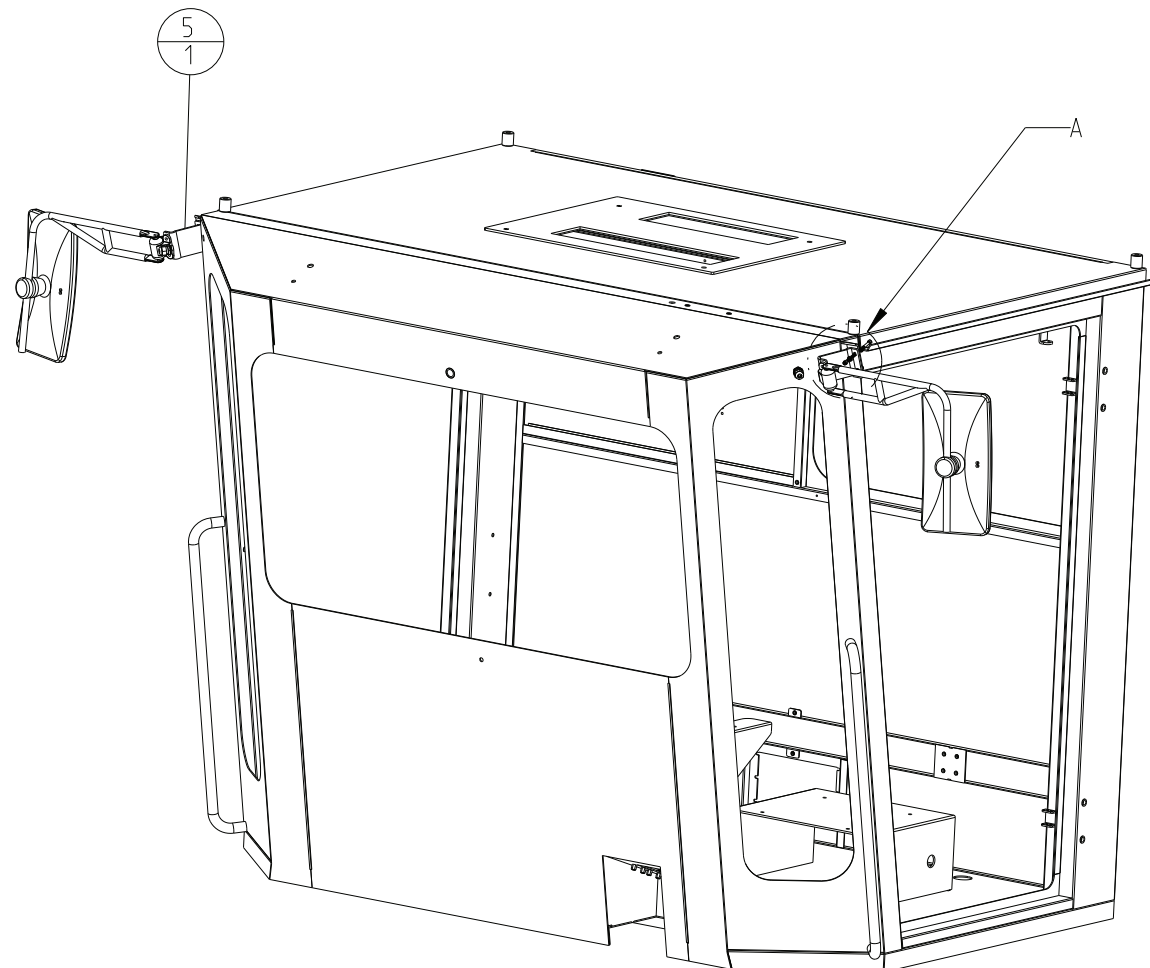
D

C

B

A

REP ITM	CODE SERCEL PART NUM.	DESIGNATION DESCRIPTION	REFERENCE / SPECIF. / LA PART NUMBER / SPECIF.	QTE QTY
1	10006252	RONDELLE ANTI VIBR. M6 LG / VIBR. PROOF WASHER	SERCEL	8
2	211311286	VIS CHC M6-25 8.8 Z.B. / BOLT HEX HEAD SOC	SERCEL	4
3	216411060	ECROU M6, B. PLAST CL8 Z.B / NUT LOCK	SERCEL	4
4	400269753	SUPPORT RETRO / REAR MIRR. BRACKET	SERCEL	1
5	400269773	SUPPORT RETRO / REAR MIRR. BRACKET	SERCEL	1

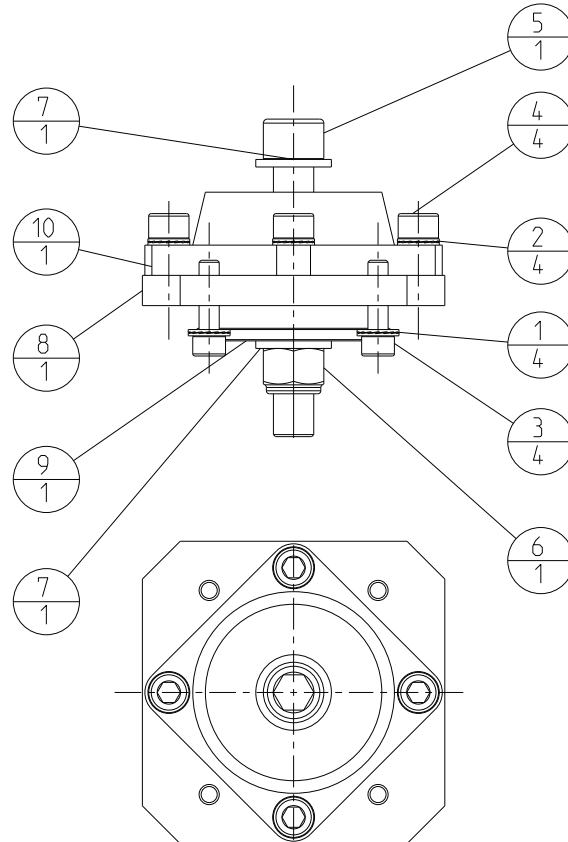


F									
E									
D									
C									
B									
A	CREATION	PB	Sep-09-15		BUTTIN P.	Sep-09-15			
REV D/T	NATURE DE LA MODIFICATION TYPE OF MODIFICATION	DESSINE/VERIFIE DRAWN/VERIFIED	DATE	VISA	APPOUVE APPROVED	DATE	VISA		
MATIERE/MATERIAL:				COULEUR/COLOR:		MASSE/WEIGHT: 0,000 T			
TRAITEMENT/TREATMENT:				VOLUME: m3		TOL. GEN./GEN.TOL. (Sauf specif):			
TITRE/TITLE N65 NEO RETROVISEURS EXT. / REAR VIEW MIRROR						LE PLAN ORIGINAL SIGNE EST AU PLANEX ETAT DE SURFACE/MACHINE FINISH: SUIVANT INSTRUCTION: S902000324			
CE PLAN EST LA PROPRIETE INALIENABLE DE		NUMERO DE PLAN / DRAWING REFERENCE		Echel: 0,050 Scale					
SERCEL		SERCEL ETABLISSEMENT DE SAINT GAUDENS		604660173		CLQ: /REF CL: ART			
CODE OTAN : F2577		BP 69 - 31802 SAINT-GAUDENS CEDEX (FRANCE) Tel:(33)(0)561899000 Fax:(33)(0)5 61899033				Folio: 1/1			
S 904 00 0233/00 Ce document est la propriété de SERCEL St-GAUDENS, toute reproduction et diffusion sont interdites sans son autorisation									

B

A

REP ITM	CODE SERCEL PART NUM.	DESIGNATION DESCRIPTION	REFERENCE / SPECIF./ LA PART NUMBER / SPECIF.	QTE QTY
1	10006259	RONDELLE ANTI VIBR. M8 LG / VIBR.PROOF WASHER	SERCEL	4
2	10006331	RONDELLE ANTI VIBR. M10 / VIBR.PROOF WASHER	SERCEL	4
3	211311327	VIS CHC M8-30 8.8 ZB. / BOLT HEX HEAD SOC	SERCEL	4
4	211322288	VIS CHC M10-25 10.9 NOIRE / BOLT HEX HEAD SOC	SERCEL	4
5	211334611	VIS CHC M16-110 12.9 NOIRE / BOLT HEX HEAD SOC	SERCEL	1
6	216421160	ECROU M16, B. PLAST CL10 Z.B / NUT LOCK	SERCEL	1
7	219710015	RONDELLE M16N, DIN125-1A / PLAIN HEAVY DUTY WASHER	SERCEL	2
8	400271764	ADAPTATEUR SILENT BLOC / SILENTBLOC ADAPTER	SERCEL	1
9	400271774	RONDELLE ANTI REBOND / WASHER	SERCEL	1
102	51100015K05	SUPPORT ELASTIQUE CABINE / SILENT BLOCK	SERCEL	1



F								
E								
D								
C								
B								
A	CREATION	PB	Mar-22-16		BUTIN P.	Mar-22-16		

REV D/T	NATURE DE LA MODIFICATION TYPE OF MODIFICATION	DESSINE/VERIFIE DRAWN/VERIFIED	DATE	VISA	APPROUVE APPROVED	DATE	VISA

MATIERE/MATERIAL:	COULEUR/COLOR:	MASSE/WEIGHT: 0,002 T
TRAITEMENT/TREATMENT:	VOLUME: m3	--(---)---(---)---

TITRE/TITLE N65 NEO ENS. SUPPORT CABINE / ASSY CAB MOUNT	LE PLAN ORIGINAL SIGNE EST AU PLANEX	TOL.GEN./GEN.TOL.(Sauf specif):
		ETAT DE SURFACE/MACHINE FINISH: SUIVANT INSTRUCTION: S902000324

 SERCEL ETABLISSEMENT DE SAINT GAUDENS BP 69 - 31802 SAINT-GAUDENS CEDEX (FRANCE) Tel: (33)(0)561899000 Fax: (33)(0)5 61899033 CODE OTAN : F2577	NUMERO DE PLAN / DRAWING REFERENCE 604690704	Echel: 0,333 Scale CLQ: /REF CL: ART Folio: 1/1
	S 904 00 0233/00 Ce document est la propriété de SERCEL St-GAUDENS, toute reproduction et diffusion sont interdites sans son autorisation	

B

A